

InSync 

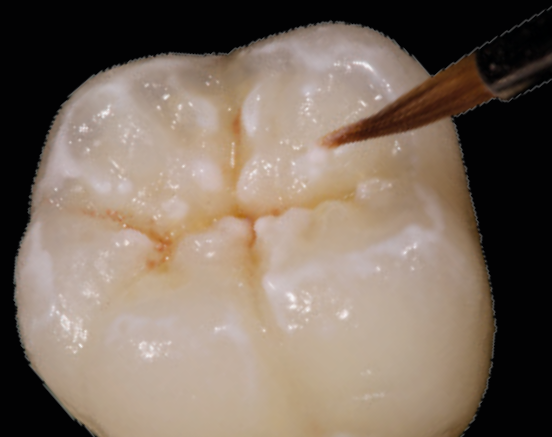


FC

QUICK START GUIDE



JENSEN
DENTAL



QUICK START GUIDE



InSync FC

Stain & Glaze System

InSync FC is the universal staining and glazing system for simple and efficient individualisation. InSync FC is suitable for fully anatomical or layered restorations based on:

- Zirconia
- Lithium-Disilicate
- Titanium
- Precious alloys
- Non-precious alloys

ONE FOR ALL

PREPARATION

- Before applying InSync FC, the surface must be clean and free of grease.
- If desired, the surface can be cleaned with a 50/110 µm sandblaster at 1.5 bar pressure.

PROCESSING INSTRUCTIONS

- Do not pour excess liquid out of the containers.
- Mix InSync FC colours well with a metal-free spatula before each application.
- The Stain & Glaze Liquid can be used to individually adjust the consistency of the colours.
- The pastes must not come into contact with water.
- Always use a clean and dry brush.

FIRING PARAMETER *

	Layering Technique		Full monolithic	
	Stain	Glaze	Stain	Glaze
Standby temperature [°C]	450	450	450	450
Dry time [min]	2	2	2	2
Closing time [min]	4	4	4	4
Start temperature [°C]	600	600	620	620
Vacuum start [°C]	600	600	620	620
Heat rate [°C/min]	45	45	45	45
Final Temperature [°C]*	730	730	740	760
Vacuum end [°C]	730	730	740	760
Holding time [min]	1	1	1	1
Opening time [min]	1	1	1	1

* The specified temperatures are guide values and may vary depending on the furnace.

APPLICATION

- Apply InSync FC colors to the prepared surface according to their intended use.

STORAGE

- Store in a dry place at +12°C to +38°C.

