

InSync MC by ZTM Axel Götges



Hybrid
technique



Hybrid technique by ZTM Pascal Holthaus



InSync MC

Create your individual InSync MC kit or start with our InSync MC smart kit.

Contact us, we will be happy to advise you.



InSync MC smart Kit

Service & Support

General requests: info@jensendental.de +49 7123 92260

Technical support: support@jensendental.de

Website: www.jensendental.de/en

Webshop: <https://shop.jensendental.de/en>



4336021122

Jensen GmbH | Gustav-Werner-Straße 1 | 72555 Metzingen | Germany | info@jensendental.de | www.jensendental.de

InSync[®] MC
Veneering Ceramic

PRETTY
COOL!

PRODUCT
INFORMATION

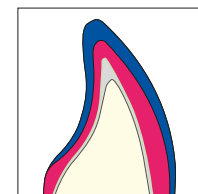
English

JENSEN
DENTAL

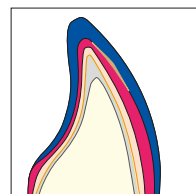
versatile

- The InSync MC ceramic system opens up comprehensive possibilities for the economical fabrication of natural-looking, biocompatible restorations. Due to its wide CTE range, InSync MC is suitable for all fusing alloys with a CTE range of 14, regardless if they are high gold, reduced gold or non precious alloys
- With the consistent colour concept of InSync MC anything is possible, from efficient BASIC layering with two masses to aesthetically demanding, individual ADVANCED layering. (1) (2)
- In combination with MiYO, the InSync MC layering ceramic is perfect for restorations in smart hybrid technique. (3)
- The comprehensive colour palette - in accordance with the VITA® Classic Colour System* - offers almost unlimited creative possibilities.
- The ceramic system is rounded off by the high-gloss glaze that fires at low temperatures.

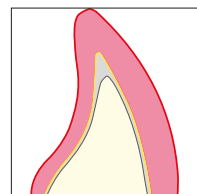
* VITA® Classic is a registered trademark of VITA Zahnfabrik H. Rauter GmbH & Co. KG



1: Efficient BASIC layering with 2 masses



2: Individual ADVANCED layering



3: Smart hybrid technique in combination with MiYO

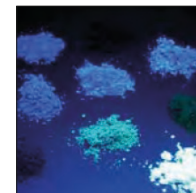


esthetic

- For the InSync MC Ceramic System, the base materials were developed completely from scratch. The fluorescence, translucency and opacity of the ceramic are based on the human tooth. These advantageous optical characteristics lend a high-quality, discerning aesthetic and naturally lifelike effect to all dental restorations.
- Special ingredients create a ceramic material with a subtle auto-fluorescence and unusual brilliance. (4) (5)
- The high colour stability and brilliance are retained even after repeated firing.
- These advantageous optical properties give all InSync MC restorations a high aesthetics and a natural vivid effect.



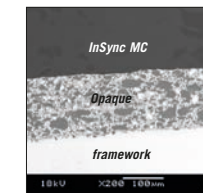
4: Colour pigments in daylight conditions



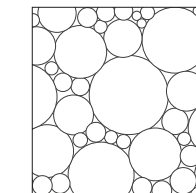
5: Fluorescent colour pigments (UV light)

secure

- The opaquer is an important component of the InSync MC ceramic system. It forms a secure bond between the framework and the ceramic layer and ensures a natural result. (6)
- InSync MC's unique particle size distribution ensures excellent sculptability, paired with low shrinkage. (7)
- The ceramic is based on synthesised feldspar. It is particularly CTE and colour stable. This ensures safety during processing even after several firings.
- The hardness of the InSync MC veneering ceramic corresponds to that of a natural tooth. This minimises dysfunctions of the stomatognathic system.
- High biocompatibility.



6: REM | Opaque for a reliable, tight adhesive bond



7: Particle size distribution